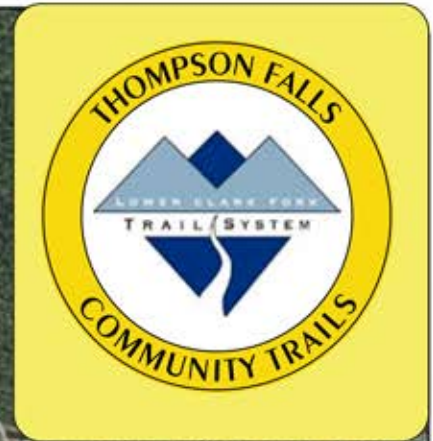
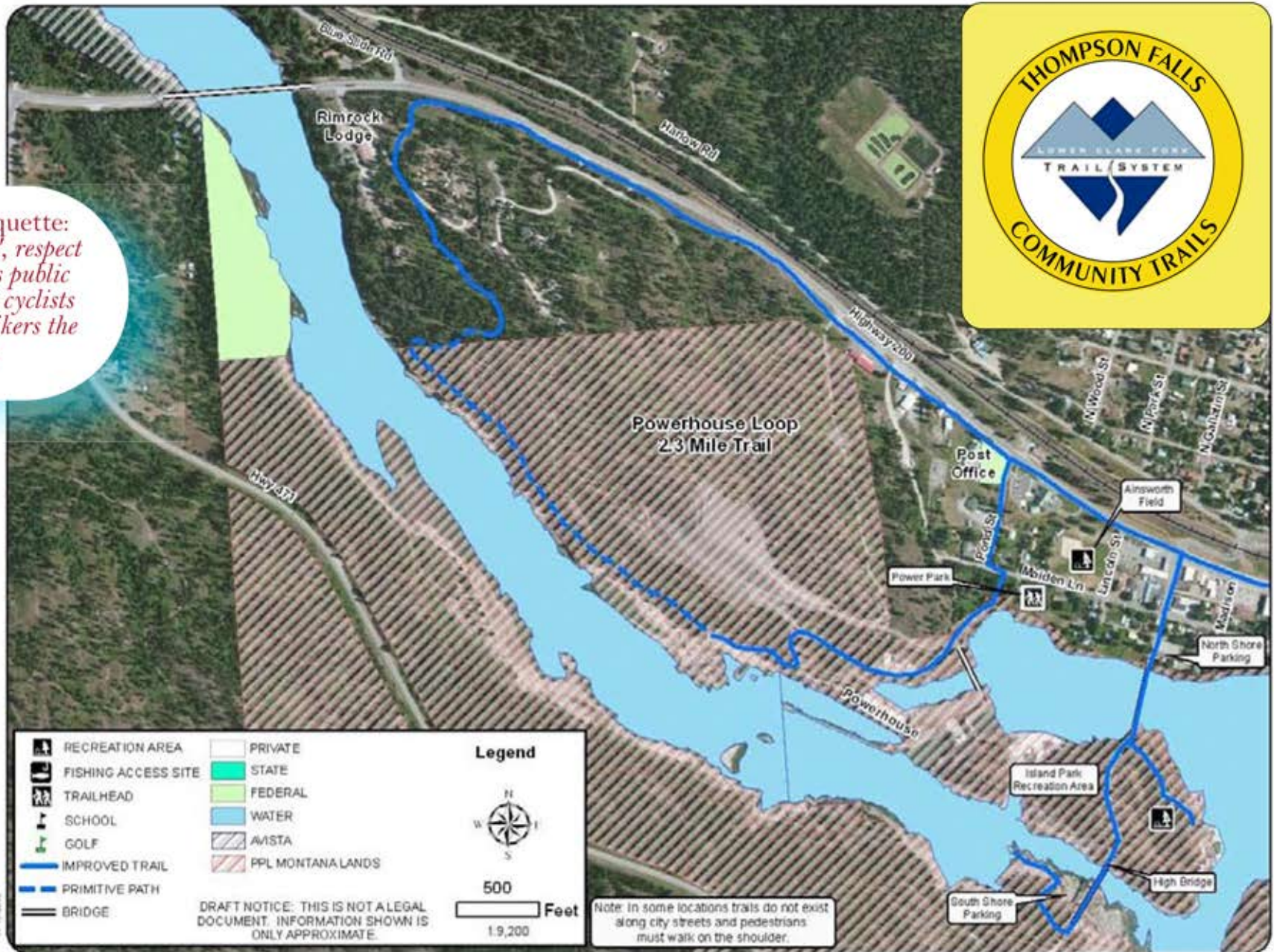


Please use trail etiquette: 'pack it in, pack it out', respect other users as well as public and private property; cyclists should always give hikers the right of way.



MAIN PPL MONTANA POWERHOUSE



TFCT MAP-1

### Directions to the Powerhouse Loop Trail:

In Thompson Falls, from the west end of Main Street (Hwy 200), head south on Pond Street (by the Post Office) towards the river. At the end of Pond Street, make a left on Maiden Lane; the PPL Montana Power Park will be immediately on the right where parking is provided. Follow the sidewalk through the center of the park, turning left on the paved road that leads to the powerhouse and follow it to the powerhouse gates. Do not enter the gates; look right where there are directional signs pointing to the trail. Follow signs and markers until the loop returns to the Post Office and Pond Street. Turn right on Pond Street and head back to the trailhead at the Power Park on Maiden Lane. A seasonal restroom is available at the Power Park.